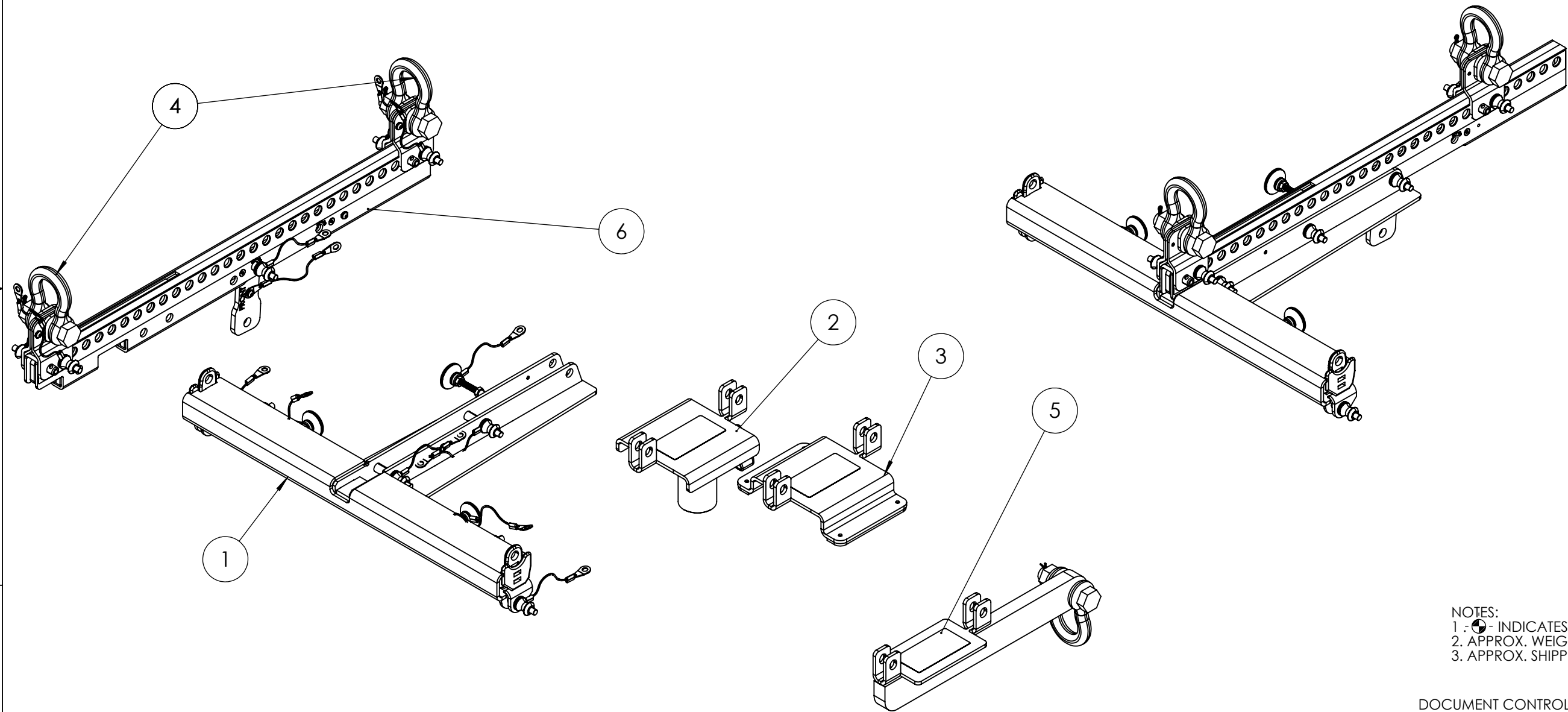
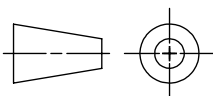



1		2		3		4		5		6										
ITEM NO.	PART NUMBER	DESCRIPTION	QTY.	REVISIONS																
												REV	DESCRIPTION				APPR / DATE			
												1	INITIAL RELEASE PER ECOEAW1508				DEM 11/21/24			
1	WELDMENT BLK KF206_NT206L FLYBAR	2072583-9999	1																	
2	ASSY POLE MOUNT BLK KF206_NT206L	2072617-9999	1																	
3	ASSY SUB MOUNT NT206L	2072657-9999	1																	
4	SHACKLE MOUNT KF206_NT206L	2072619-9999	2																	
5	EAW ACCY PULLBACK BRACKET NT206L	2072664-90	SOLD SEPERATELY																	
6	ASSY STINGER W LINK BLK NT206L	2072663-9999	1																	

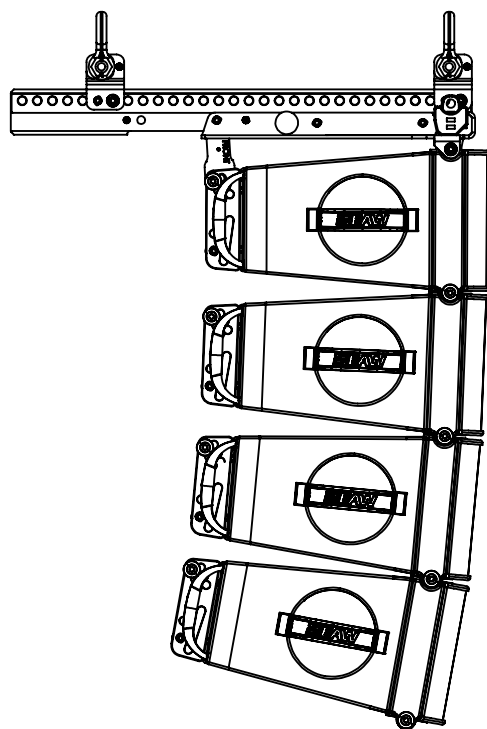


NOTES:  
1.  INDICATES THE CENTER OF GRAVITY.  
2. APPROX. WEIGHT 13.6 kg [30 LB.]  
3. APPROX. SHIPPING WEIGHT 15.9 kg[35 LB.]

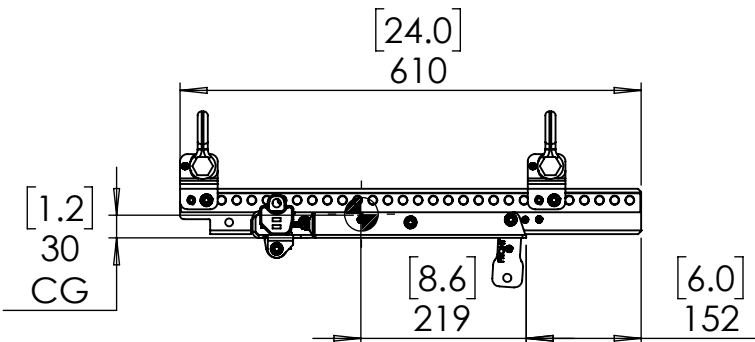
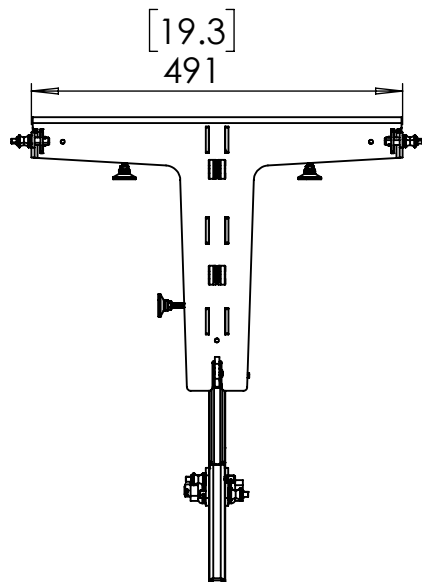
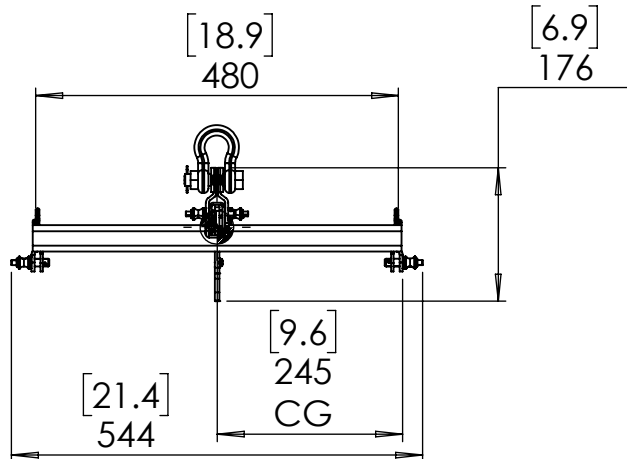
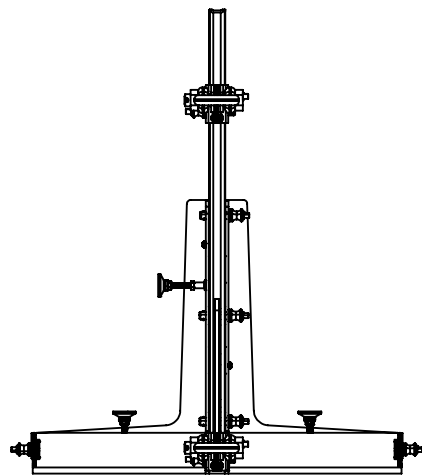
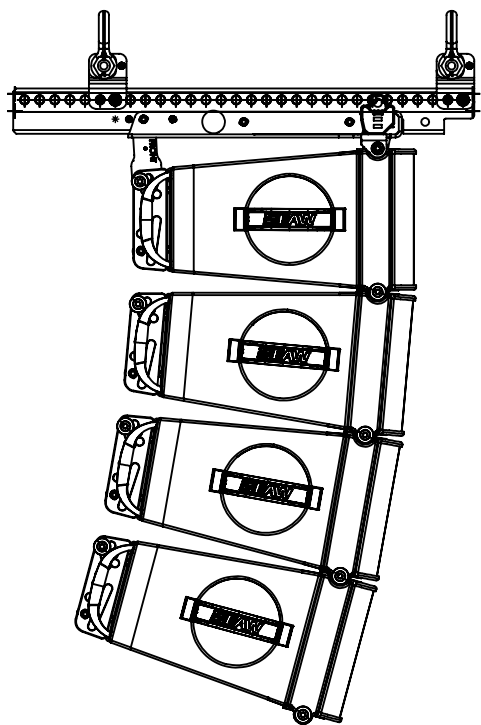
DOCUMENT CONTROL PER SPECIFICATION 4.5.201

THIRD ANGLE PROJECTION 		UNLESS OTHERWISE SPECIFIED: ALL DIMENSIONS ARE IN INCHES DUAL [MILLIMETERS] DIMENSIONS FOR REF ONLY  TOLERANCE IN INCHES X.X ±.03 X.XX±.015 X.XXX±.005 FRACTIONS ±1/32 ANGLES ±1/2° (X.XX) = REF DIMS NO TOLERANCE IMPLIED  TSC = THEORETICAL SHARP CORNER  DIMENSIONS ACROSS CENTERLINES TO BE SYMMETRICAL		STATUS		 EASTERN ACOUSTIC WORKS 19 NATIONAL DR, FRANKLIN MA 02038	
				APPROVALS	DATE		
THIS DRAWING IS THE PROPERTY OF EAW AND SHALL NOT BE COPIED, REPRODUCED, OR USED AS THE BASIS FOR MANUFACTURE OR SALE OF APPARATUS WITHOUT WRITTEN AUTHORIZATION. DO NOT SCALE DRAWING.		DRAWN: D.MEYER CHECKED: DES ENG: MFG ENG:		11/21/24		TITLE: CUSTOMER DRAWING NT206L FLYBAR KIT	
						B	SHEET 1 OF 8
						DWG. NO. 2072581-CD	REV 1

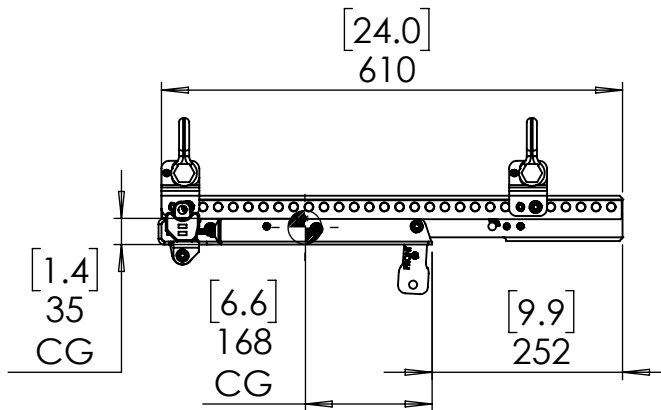
STINGER SHOWN IN POSITION A  
SPEAKERS SOLD SEPERATELY



STINGER SHOWN IN POSITION B



STINGER SHOWN IN POSITION B  
WITH SHACKLES

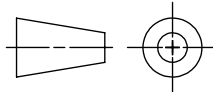


STINGER SHOWN IN POSITION A  
WITH SHACKLES

NOTES:  
1. INDICATES THE CENTER OF GRAVITY.  
2. APPROX. WEIGHT 13.6 kg [30 LB.]

DOCUMENT CONTROL PER SPECIFICATION 4.5.201

THIRD ANGLE PROJECTION



THIS DRAWING IS THE PROPERTY  
OF EAW AND SHALL NOT BE COPIED,  
REPRODUCED, OR USED AS THE  
BASIS FOR MANUFACTURE OR SALE  
OF APPARATUS WITHOUT WRITTEN  
AUTHORIZATION.  
DO NOT SCALE DRAWING.

UNLESS OTHERWISE SPECIFIED:  
ALL DIMENSIONS ARE IN INCHES  
DUAL [MILLIMETERS] DIMENSIONS FOR REF ONLY

TOLERANCE IN INCHES  
X.X ±.03 X.XX ±.015 X.XXX ±.005  
FRACTIONS ±1/32  
ANGLES ±1/2°  
(X.XX) = REF DIMS  
NO TOLERANCE IMPLIED

TSC = THEORETICAL SHARP CORNER

DIMENSIONS ACROSS CENTERLINES  
TO BE SYMMETRICAL

STATUS PRO

APPROVALS

DATE

DRAWN:

D.MEYER

11/21/24

CHECKED:

DES ENG:

MFG ENG:

**EAW** EASTERN ACOUSTIC WORKS  
19 NATIONAL DR, FRANKLIN MA 02038

TITLE:  
CUSTOMER DRAWING  
NT206L FLYBAR

B

SHEET 2 OF 8

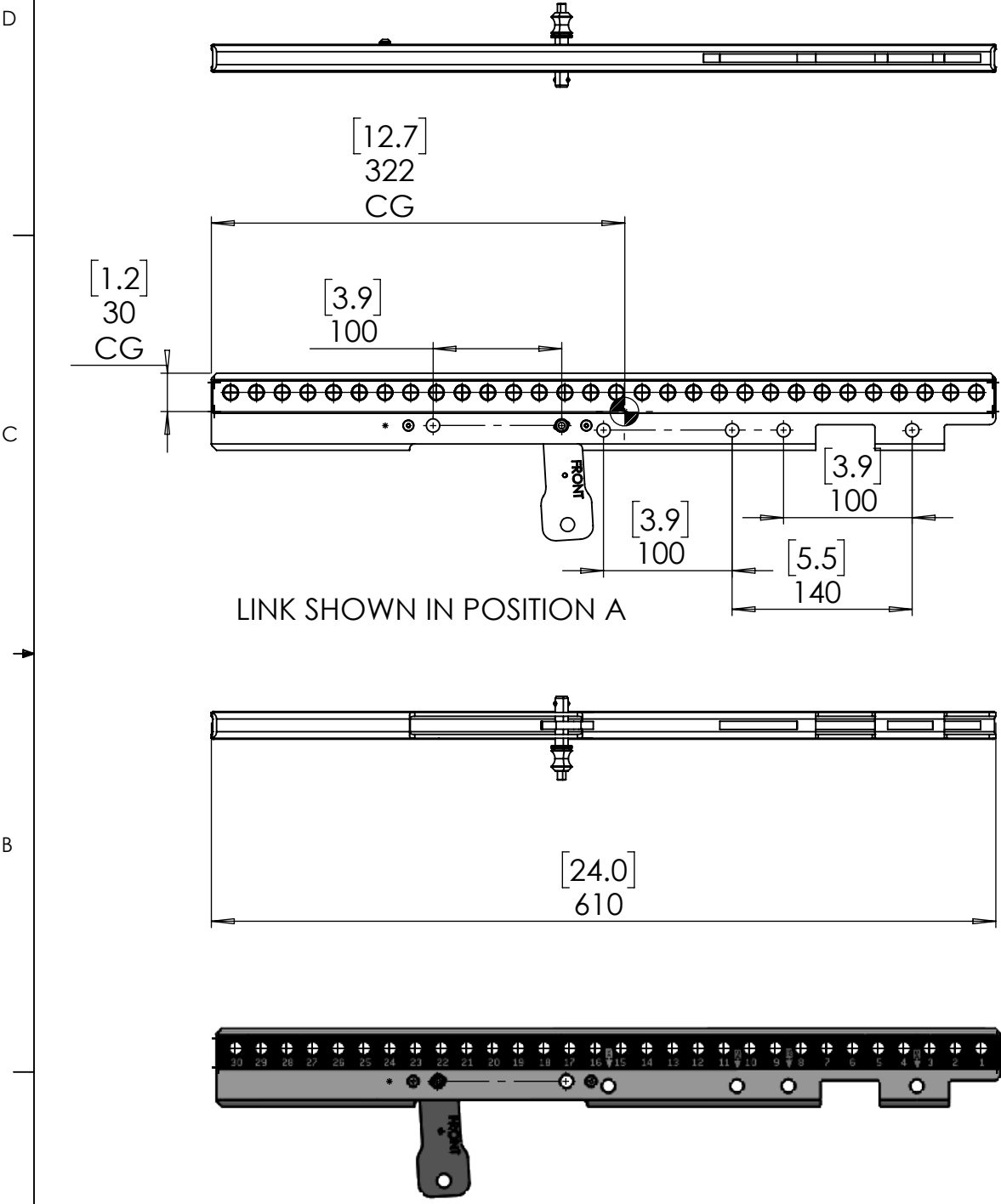
SCALE: 1:10

DWG. NO.

2072581-CD

REV 1

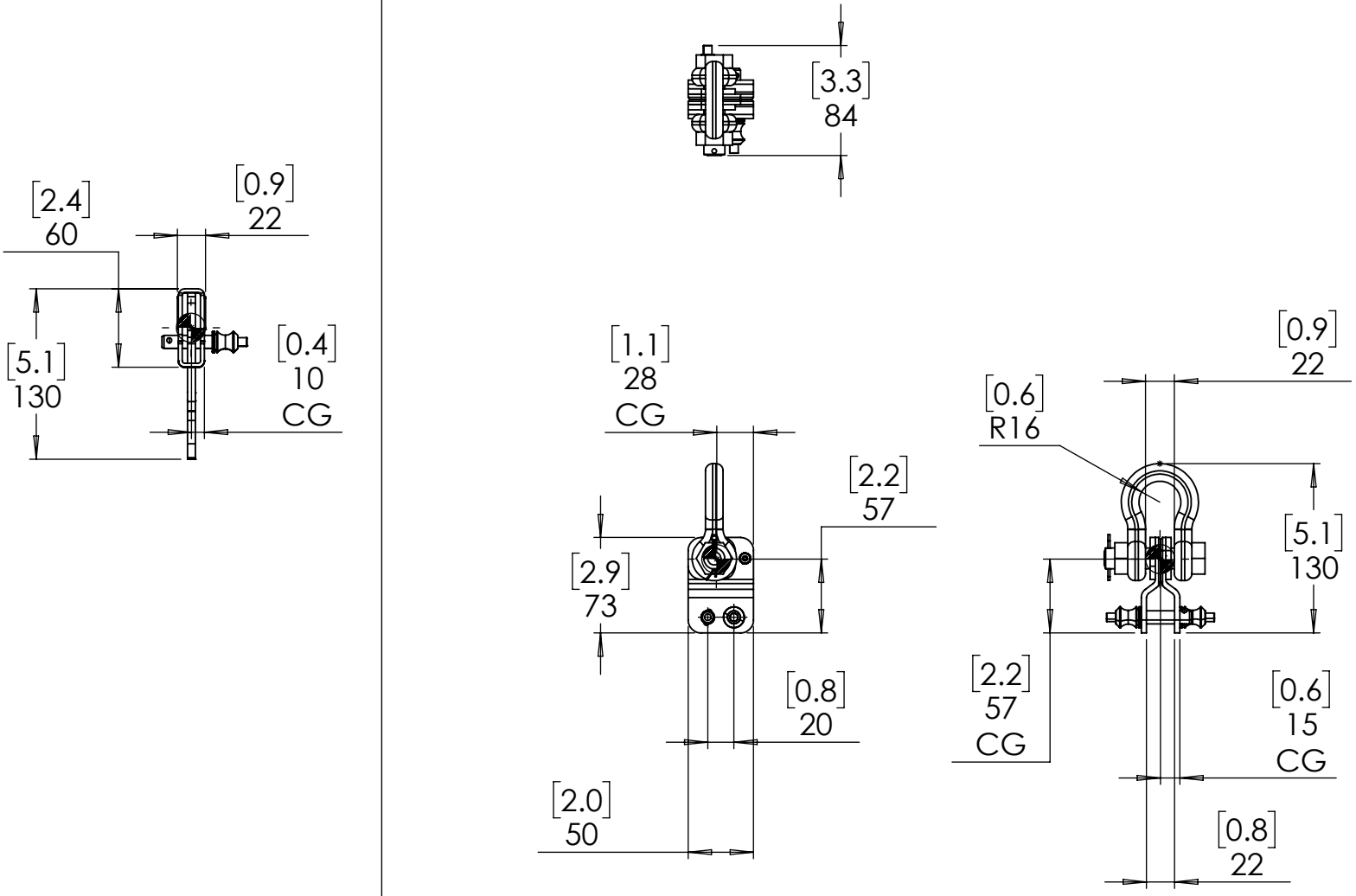
NT206L STINGER WITH LINKS SHOWN IN POSITION A & B



LINK SHOWN IN POSITION B



NOTES:  
1. INDICATES THE CENTER OF GRAVITY.  
2. APPROX. WEIGHT 2.3 kg [5.1 LB.]

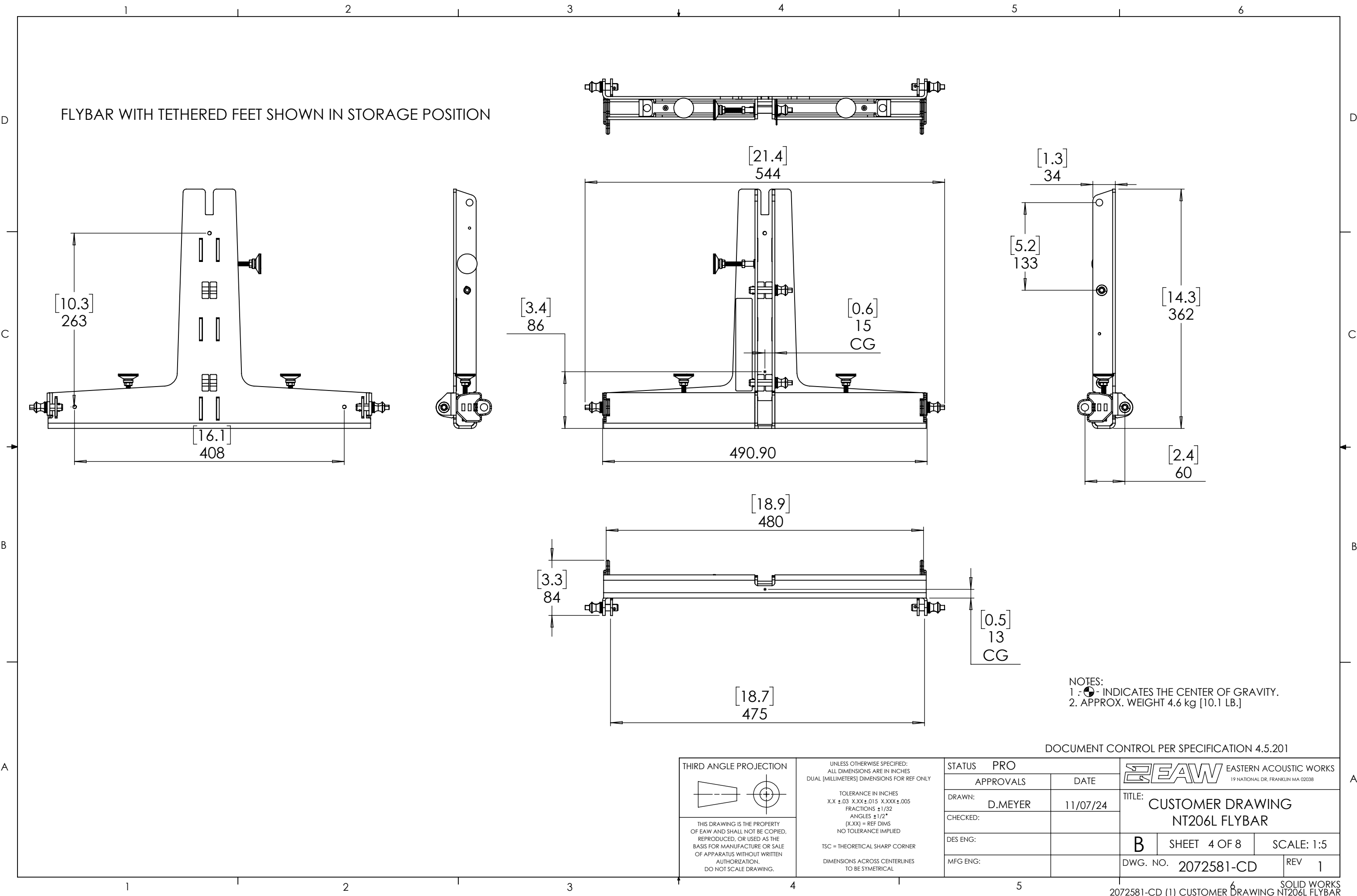
NT 206L SHACKLE ASSMBLY



NOTES:  
1. INDICATES THE CENTER OF GRAVITY.  
2. APPROX. WEIGHT 0.7 kg [1.6 LB.]

DOCUMENT CONTROL PER SPECIFICATION 4.5.201

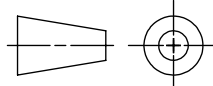

THIRD ANGLE PROJECTION 	UNLESS OTHERWISE SPECIFIED: ALL DIMENSIONS ARE IN INCHES DUAL [MILLIMETERS] DIMENSIONS FOR REF ONLY		STATUS PRO		 EASTERN ACOUSTIC WORKS 19 NATIONAL DR, FRANKLIN MA 02038		
	TOLERANCE IN INCHES X.X ±.03 X.XX ±.015 X.XXX ±.005 FRACTIONS ±1/32 ANGLES ±1/2° (X.XX) = REF DIMS NO TOLERANCE IMPLIED		APPROVALS		DATE		TITLE: CUSTOMER DRAWING NT206L STINGER/ SHACKLE
	TSC = THEORETICAL SHARP CORNER		DRAWN: D.MEYER		11/07/24		
	DIMENSIONS ACROSS CENTERLINES TO BE SYMMETRICAL		CHECKED:				B   SHEET 3 OF 8   SCALE: 1:5
	THIS DRAWING IS THE PROPERTY OF EAW AND SHALL NOT BE COPIED, REPRODUCED, OR USED AS THE BASIS FOR MANUFACTURE OR SALE OF APPARATUS WITHOUT WRITTEN AUTHORIZATION. DO NOT SCALE DRAWING.		DES ENG:				
MFG ENG:					DWG. NO. 2072581-CD   REV 1		



FLYBAR WITH TETHERED FEET SHOWN IN STORAGE POSITION

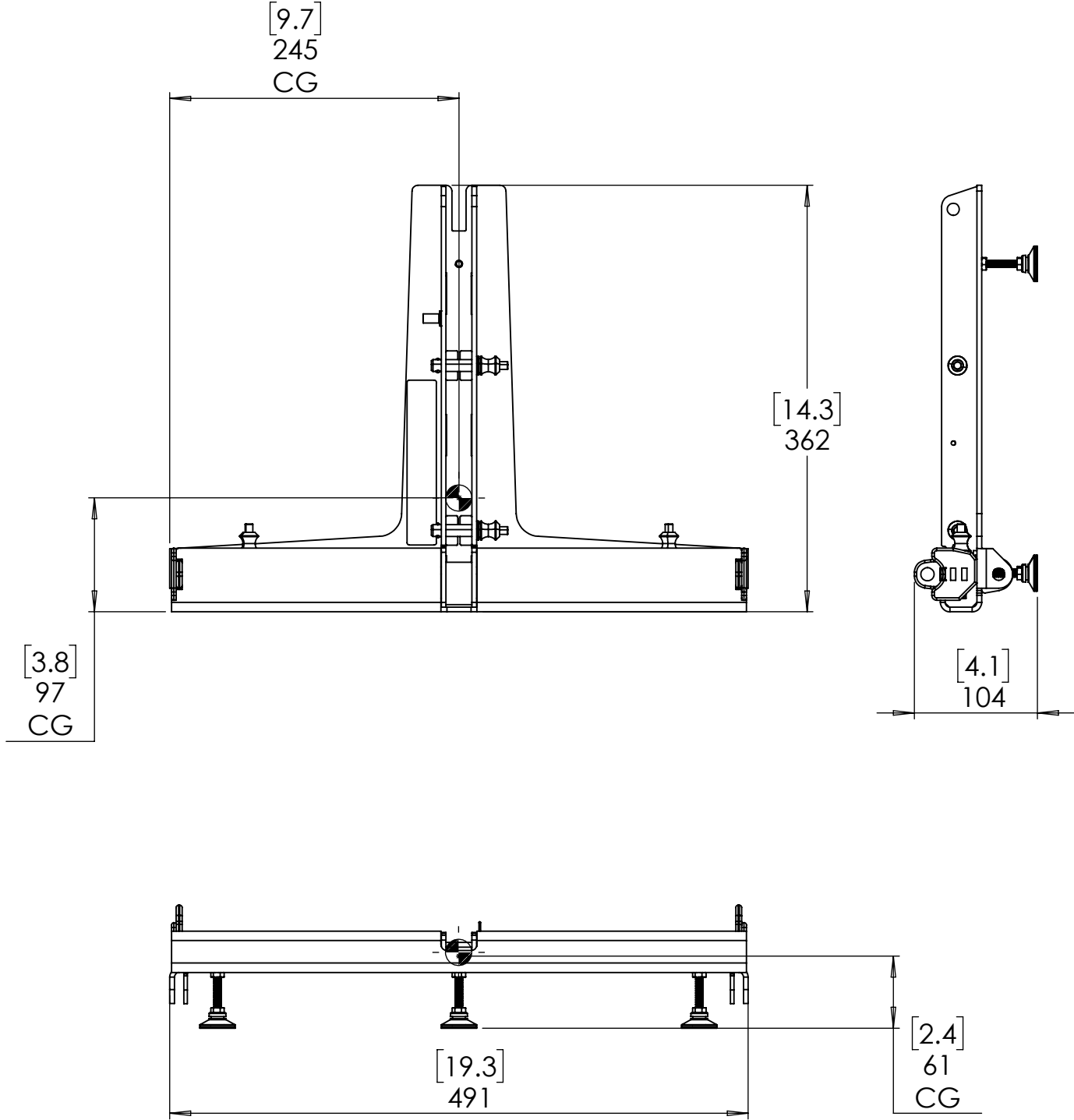
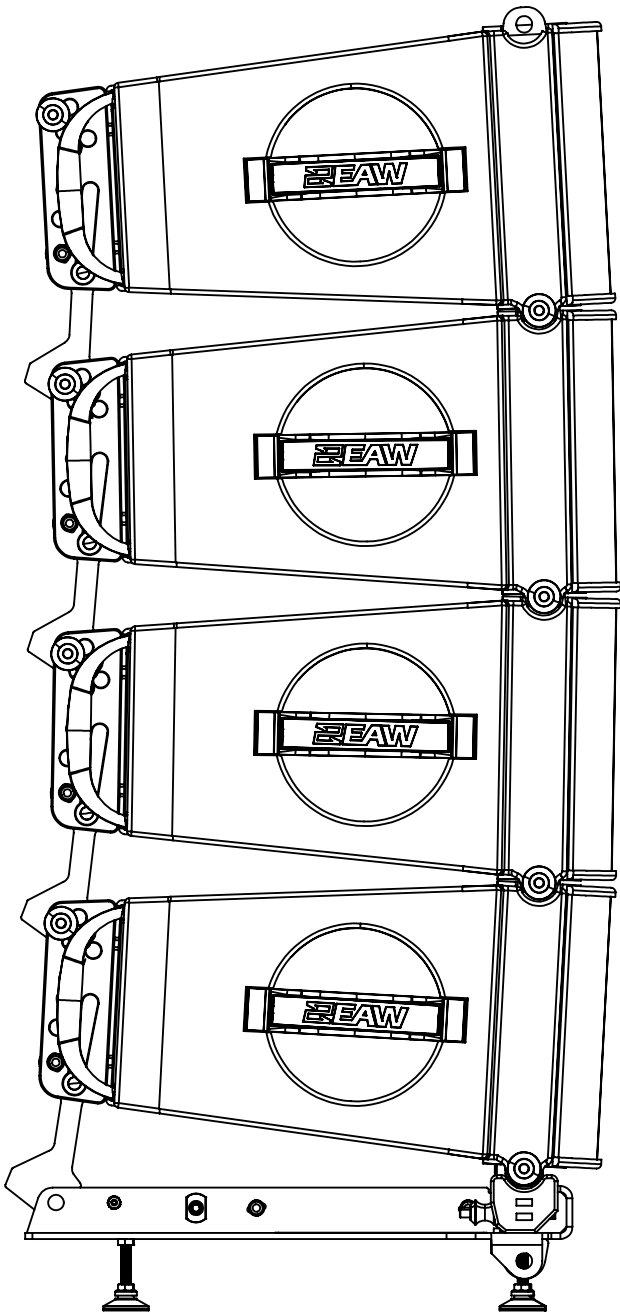
NOTES:  
1.  INDICATES THE CENTER OF GRAVITY.  
2. APPROX. WEIGHT 4.6 kg [10.1 LB.]

DOCUMENT CONTROL PER SPECIFICATION 4.5.201

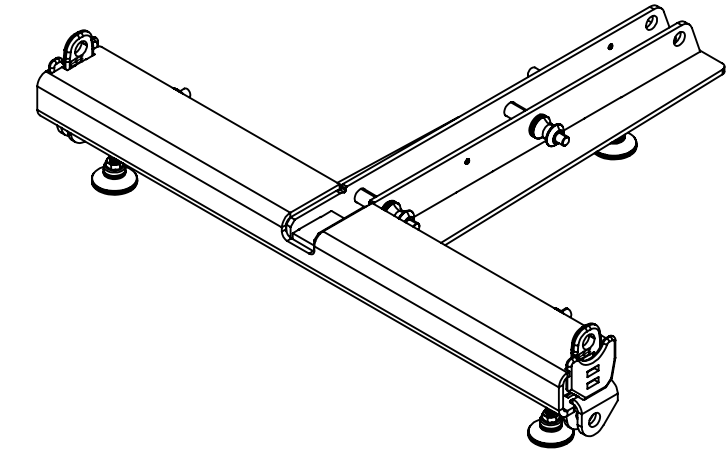
<div>THIRD ANGLE PROJECTION</div> <div></div> <div>THIS DRAWING IS THE PROPERTY OF EAW AND SHALL NOT BE COPIED, REPRODUCED, OR USED AS THE BASIS FOR MANUFACTURE OR SALE OF APPARATUS WITHOUT WRITTEN AUTHORIZATION. DO NOT SCALE DRAWING.</div>	<div>UNLESS OTHERWISE SPECIFIED: ALL DIMENSIONS ARE IN INCHES DUAL [MILLIMETERS] DIMENSIONS FOR REF ONLY</div> <div>TOLERANCE IN INCHES X.X ±.03 X.XX ±.015 X.XXX ±.005 FRACTIONS ±1/32 ANGLES ±1/2° (X.XX) = REF DIMS NO TOLERANCE IMPLIED</div> <div>TSC = THEORETICAL SHARP CORNER</div> <div>DIMENSIONS ACROSS CENTERLINES TO BE SYMMETRICAL</div>	STATUS PRO		<div> EASTERN ACOUSTIC WORKS 19 NATIONAL DR, FRANKLIN MA 02038</div> <div>TITLE: CUSTOMER DRAWING NT206L FLYBAR</div> <div>B SHEET 4 OF 8 SCALE: 1:5</div> <div>DWG. NO. 2072581-CD REV 1</div>	
		APPROVALS			DATE
		DRAWN: D.MEYER	11/07/24		
		CHECKED:			
		DES ENG:			
		MFG ENG:			

D  
C  
B  
A

NT206L FLYBAR GROUND STACK APPLICATION.  
SPEAKERS SOLD SEPERATELY




REVISIONS		
REV	DESCRIPTION	APPR / DATE
2	INITIAL RELEASE PER ECOEAW1508	DEM 11/07/24



NOTES:  
1. -●- INDICATES THE CENTER OF GRAVITY.  
2. APPROX. WEIGHT 4.6 kg [10.1 LB.]  
NT206L FLYBAR IN GROUNDSTACK APPLICATION

DOCUMENT CONTROL PER SPECIFICATION 4.5.201

<div>THIRD ANGLE PROJECTION</div> <div></div> <div>THIS DRAWING IS THE PROPERTY OF EAW AND SHALL NOT BE COPIED, REPRODUCED, OR USED AS THE BASIS FOR MANUFACTURE OR SALE OF APPARATUS WITHOUT WRITTEN AUTHORIZATION. DO NOT SCALE DRAWING.</div>	<div>UNLESS OTHERWISE SPECIFIED: ALL DIMENSIONS ARE IN INCHES DUAL [MILLIMETERS] DIMENSIONS FOR REF ONLY</div> <div>TOLERANCE IN INCHES X.X ±.03 X.XX ±.015 X.XXX ±.005 FRACTIONS ±1/32 ANGLES ±1/2° (X.XX) = REF DIMS NO TOLERANCE IMPLIED</div> <div>TSC = THEORETICAL SHARP CORNER</div> <div>DIMENSIONS ACROSS CENTERLINES TO BE SYMMETRICAL</div>	STATUS PRO		<div>EAW EASTERN ACOUSTIC WORKS</div> <div>19 NATIONAL DR, FRANKLIN MA 02038</div>		
		APPROVALS		DATE		
		DRAWN: D.MEYER		11/07/24		
		CHECKED:				
		DES ENG:				
MFG ENG:				<div>TITLE:</div> <div>CUSTOMER DRAWING NT206L GROUNDSTACK APPLICATION</div>		
				<div>B</div>	<div>SHEET 5 OF 8</div>	<div>SCALE: 1:5</div>
				<div>DWG. NO.</div> <div>2072549-CD</div>		<div>REV</div> <div>2</div>

NT206L POLE MOUNT WITH FLYBAR ATTACHED.  
SPEAKERS SOLD SEPERATELY

NT206L POLE MOUNT SHOWN IN FLYBAR APPLICATION.

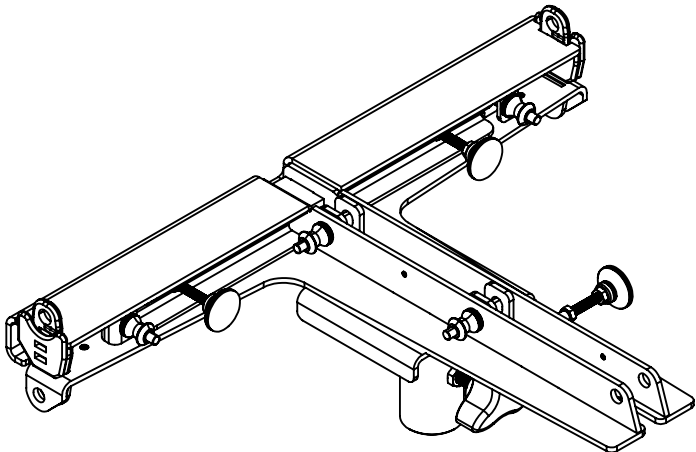
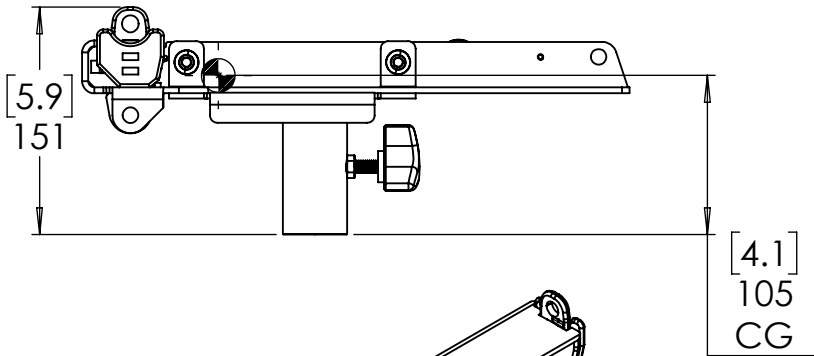
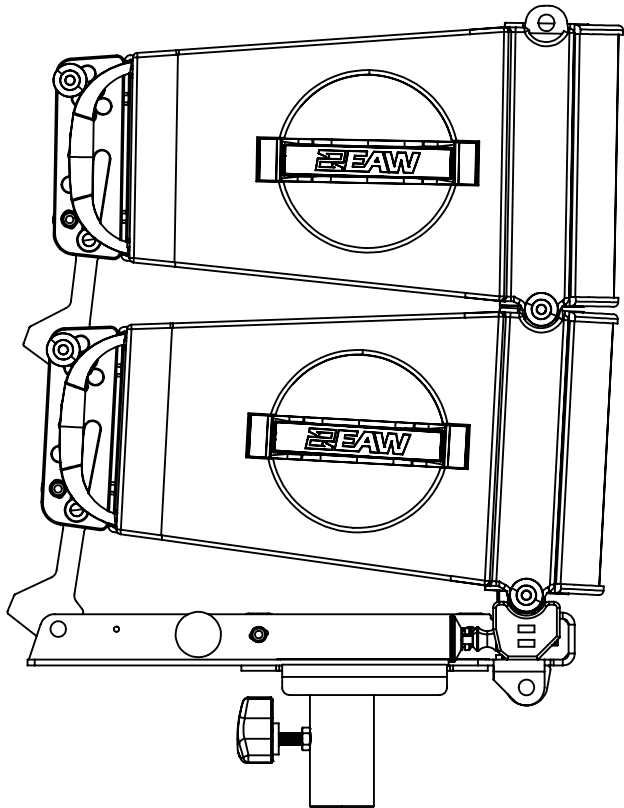
NT206L POLE MOUNT ONLY

D

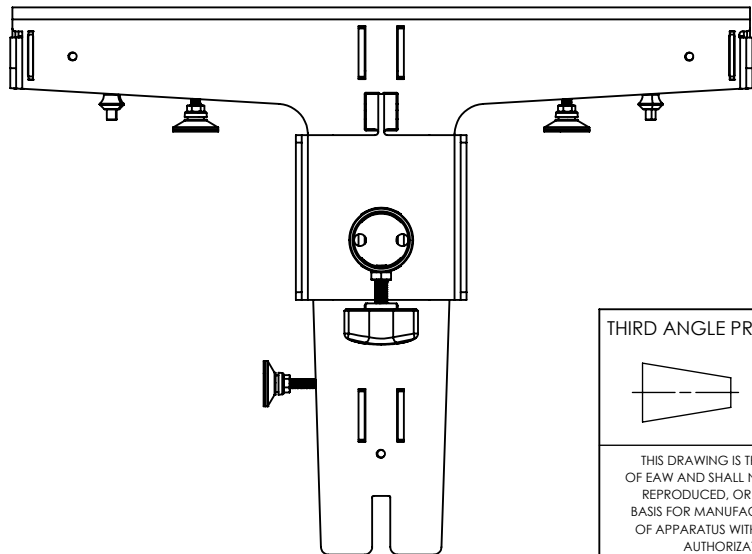
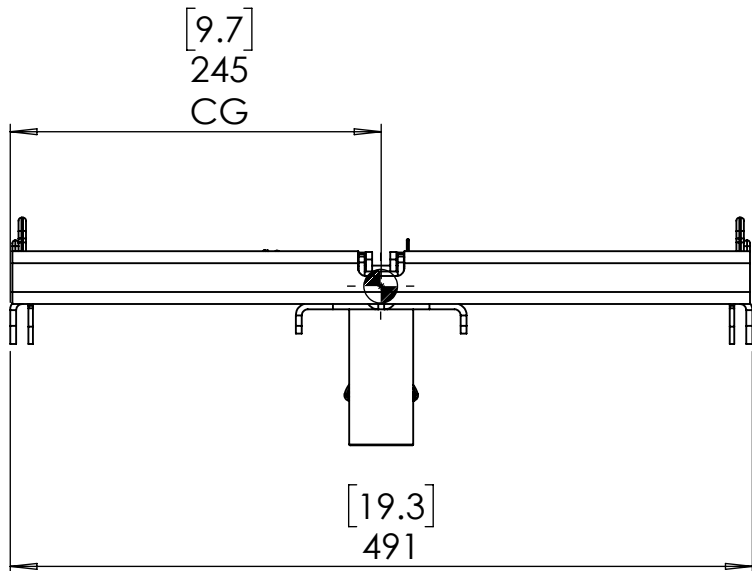
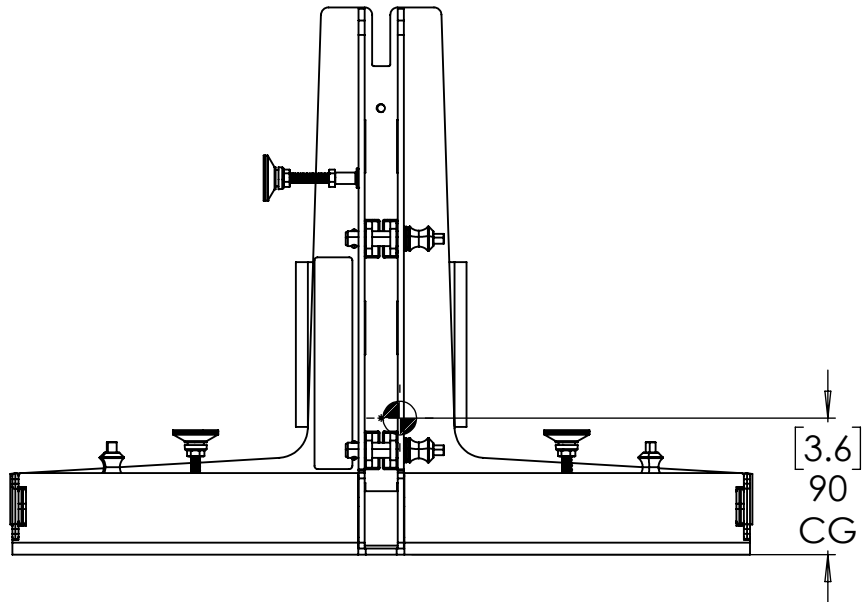
C

B

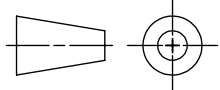
A



NOTES:  
1. - INDICATES THE CENTER OF GRAVITY.  
2. APPROX. WEIGHT 5.4 kg [11.8 LB.]  
NT206L FLYBAR WITH POLE MOUNT IN POLE MOUNT APPLICATION.



THIRD ANGLE PROJECTION



THIS DRAWING IS THE PROPERTY  
OF EAW AND SHALL NOT BE COPIED,  
REPRODUCED, OR USED AS THE  
BASIS FOR MANUFACTURE OR SALE  
OF APPARATUS WITHOUT WRITTEN  
AUTHORIZATION.  
DO NOT SCALE DRAWING.

UNLESS OTHERWISE SPECIFIED:  
ALL DIMENSIONS ARE IN INCHES  
DUAL [MILLIMETERS] DIMENSIONS FOR REF ONLY

TOLERANCE IN INCHES  
X.X ±.03 X.XX ±.015 X.XXX ±.005  
FRACTIONS ±1/32  
ANGLES ±1/2°  
(X.XX) = REF DIMS  
NO TOLERANCE IMPLIED

TSC = THEORETICAL SHARP CORNER

DIMENSIONS ACROSS CENTERLINES  
TO BE SYMMETRICAL

STATUS PRO

APPROVALS

DATE

DRAWN:

D.MEYER

12/09/24

CHECKED:

DES ENG:

MFG ENG:

**EAW** EASTERN ACOUSTIC WORKS  
19 NATIONAL DR, FRANKLIN MA 02038

TITLE: CUSTOMER DRAWING NT206L  
FLYBAR AND POLE MOUNT

B

SHEET 6 OF 8

SCALE: 1:5

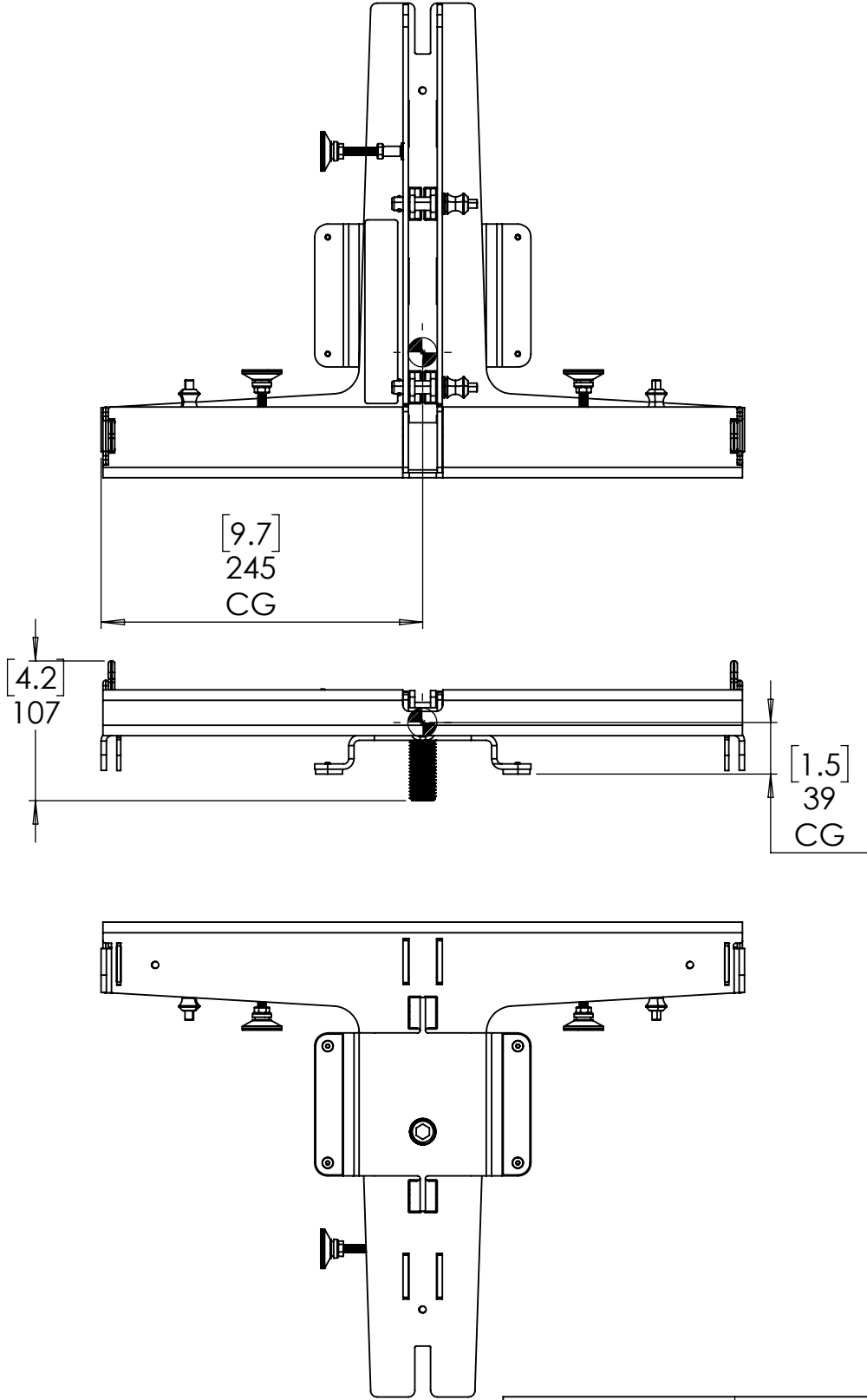
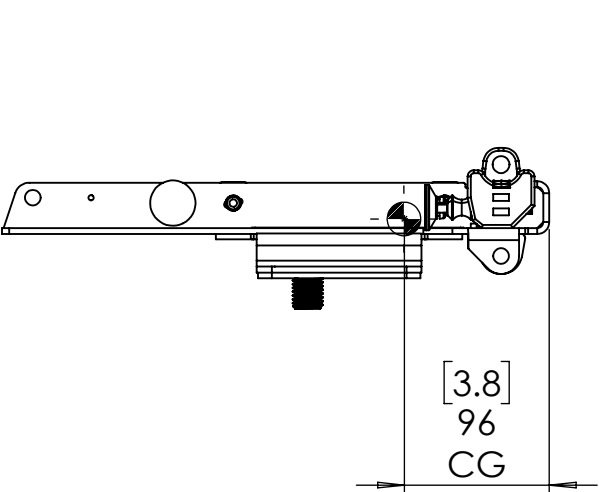
DWG. NO. 2072581-CD

REV 1

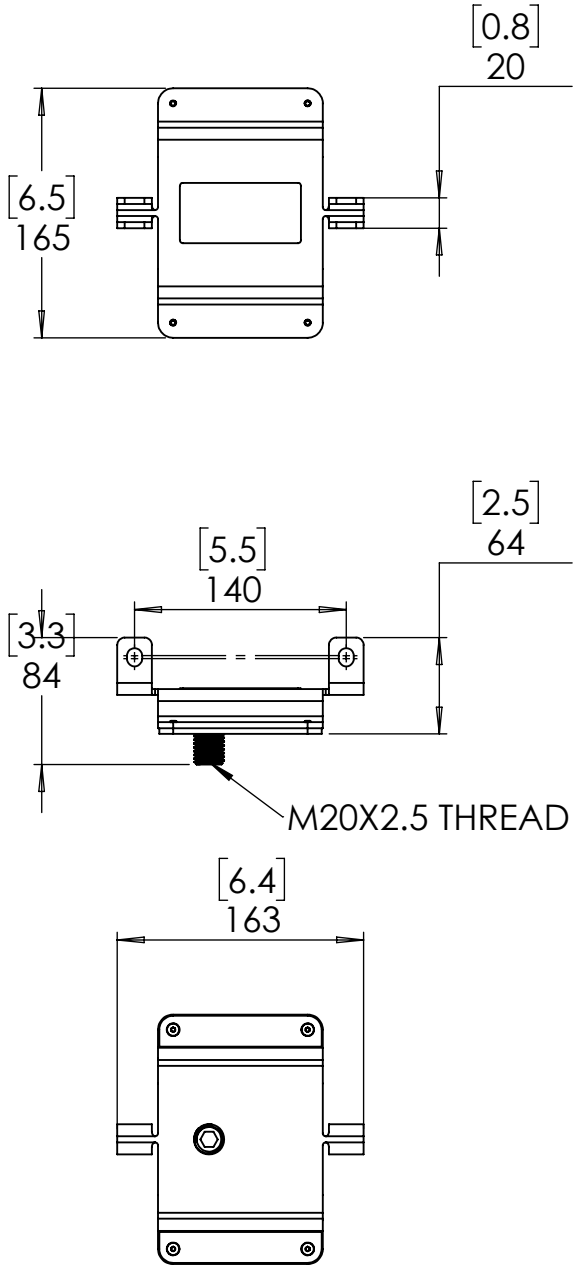
NOTES:  
1. NT206L POLE MOUNT ONLY .  
2. APPROX. WEIGHT 0.8 kg [1.8 LB.]

DOCUMENT CONTROL PER SPECIFICATION 4.5.201

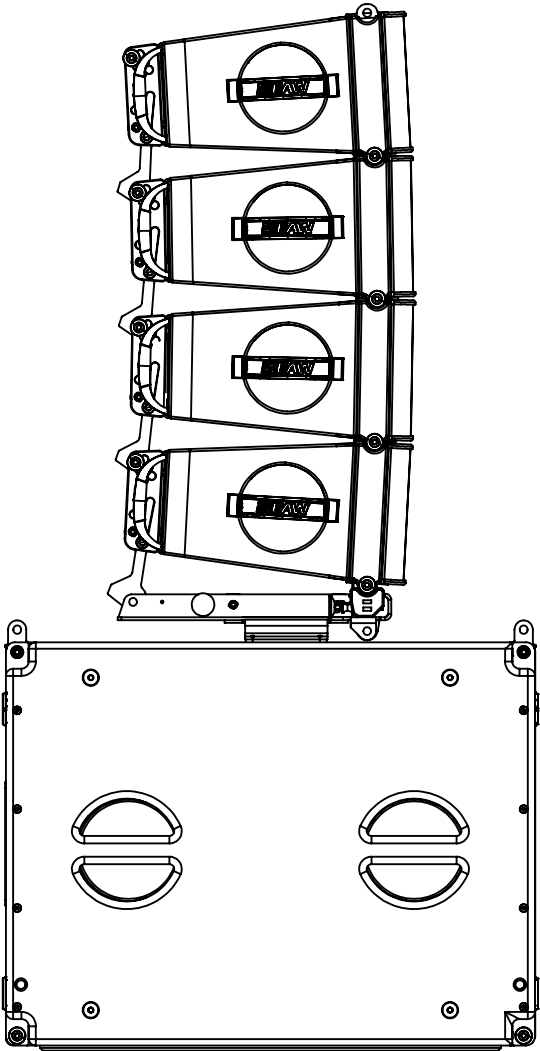
NT206L FLYBAR MOUNT SHOWN IN M20 SUB MOUNT APPLICATION.



NT206L M20 SUB MOUNT ONLY



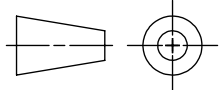
NT206L M20 SUB MOUNT WITH FLYBAR ATTACHED. SPEAKERS SOLD SEPERATELY



SCALE 1:10

NOTES:  
1. -●- INDICATES THE CENTER OF GRAVITY.  
2. APPROX. WEIGHT 5.7 kg [12.5 LB.]  
NT206L FLYBAR WITH M20 SUB MOUNT

THIRD ANGLE PROJECTION



THIS DRAWING IS THE PROPERTY OF EAW AND SHALL NOT BE COPIED, REPRODUCED, OR USED AS THE BASIS FOR MANUFACTURE OR SALE OF APPARATUS WITHOUT WRITTEN AUTHORIZATION. DO NOT SCALE DRAWING.

UNLESS OTHERWISE SPECIFIED:  
ALL DIMENSIONS ARE IN INCHES  
DUAL [MILLIMETERS] DIMENSIONS FOR REF ONLY

TOLERANCE IN INCHES  
X.X ±.03 X.XX ±.015 X.XXX ±.005  
FRACTIONS ±1/32  
ANGLES ±1/2°  
(X.XX) = REF DIMS  
NO TOLERANCE IMPLIED

TSC = THEORETICAL SHARP CORNER

DIMENSIONS ACROSS CENTERLINES  
TO BE SYMMETRICAL

STATUS PRO

APPROVALS

DRAWN: D.MEYER

CHECKED:

DES ENG:

MFG ENG:

DATE

12/10/24

EAW EASTERN ACOUSTIC WORKS  
19 NATIONAL DR, FRANKLIN MA 02038

TITLE: CUSTOMER DRAWING NT206L  
M20 SUB MOUNT APPLICATION

B

SHEET 7 OF 8

SCALE: 1:5

DWG. NO. 2072581-CD

REV 1

DOCUMENT CONTROL PER SPECIFICATION 4.5.201

NOTES:  
1. APPROX. WEIGHT 0.84 kg [ 1.85LB.]

